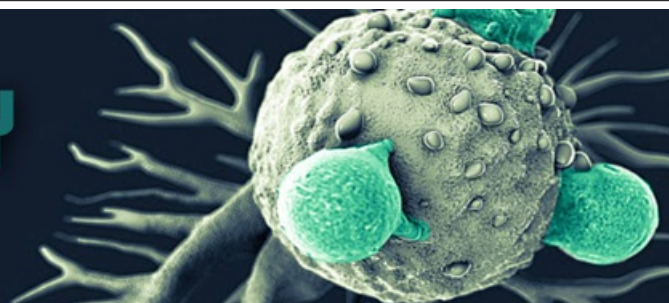


IMMUNO-ONCOLOGY

JUNE 3, 2020



| Date | Time | Track | Presentation Title | Speaker |
|-------|---------------------------|---|--|---|
| 3-Jun | 06:00 - 07:00 AM | Immunotherapeutic Modalities | Keynote Presentation: Development of Rational Immunotherapy Combinations to Overcome the Immunosuppressive Prostate Tumor Microenvironment | Sumit K. Subudhi, MD, PhD Assistant Professor, Genitourinary Medical Oncology, The University of Texas MD Anderson Cancer Center |
| 3-Jun | 07:00 - 08:00 AM | Immunotherapeutic Modalities | High throughput biomarker profiling for immunology research using MILLIPLEX® assays | Jenny Koenitzer, PhD Senior Research Investigator II, Leads Discovery & Optimization, Bristol Myers Squibb, Princeton, NJ, USA Yan Nikhamin, MS, MBA Biomarkers & Cytometry Specialistm MilliporeSigma |
| 3-Jun | 08:00 - 09:00 AM | Development and Clinical Applications of Cancer Immunotherapies | Keynote Presentation: It is Time for TIME (Tumor Immune Microenvironment) in Experimental and Diagnostic Pathology | Alexander David Borowsky, MD Professor, Pathology and Laboratory Medicine, Center for Immunology and Infectious Disease and UC Davis Comprehensive Cancer Center |
| 3-Jun | 09:30 - 10:30 AM | Latest Trends in Immuno-Oncology | Keynote Presentation: The Importance of Tissue Chemistry in Immunity-Oncology | Thomas M. Grogan, MD Professor Emeritus of Pathology, University of Arizona; Founder and Chief Scientific Advisor Emeritus, Ventana Medical Systems, Inc., a division of Roche |
| 3-Jun | 11:00 - 12:00 PM | Immunotherapeutic Modalities | Keynote Presentation: Combinatorial Approaches to Immunotherapy: Melanoma as the Example | Stephen Hodi, MD Director of the Melanoma Center and the Center for Immunology, Dana-Farber Cancer Institute, Professor of Medicine, Harvard Medical School |
| 3-Jun | 12:00 - 01:00 PM | Latest Trends In Immuno-Oncology | How multiplexed imaging reveals key insights into the tumor microenvironment to inform treatment and improve outcomes | Paul Goodwin President, The Histochemical Society; Science Director for Cytiva Fiona Ginty Technology Manager for Biosciences, GE Research Center Prachi Bogetto Diagnostics Segment Leader/Marketing Leader Cell Analysis, Cytiva |

| | | | | |
|-------|---------------------------|--|---|---|
| 3-Jun | 12:00 - 01:00 PM | Development and Clinical Applications of Cancer Immunotherapies | Single cell multiomic analysis of T-cell exhaustion | Pratip K. Chattopadhyay |
| 3-Jun | 01:00 - 02:00 PM | Immunotherapeutic Modalities | Gene manipulation in primary human immune cells: Successful strategies and applications for CRISPRko, RNAi and beyond | Verena Brucklacher-Waldert, PhD PhD in Neuroimmunology from the University of Tübingen, Germany, Manager Immunology Screening Services at Horizon Discovery |
| 3-Jun | 02:00 - 03:00 PM | Development and Clinical Applications of Cancer Immunotherapies | Dynamic Live Cell Imaging of Adherent and Immune Cells using CellASIC® ONIX2 Microfluidic Platform | Jun Park, PhD Senior Scientist, MilliporeSigma |
| 3-Jun | 03:00 - 04:00 PM | Immunotherapeutic Modalities | The roles of neoantigen peptides in personalized medicine | Samantha Zaroff, PhD Product Manager of Neoantigen Peptide Services at GenScript |
| 3-Jun | 04:00 - 05:00 PM | | Microfluidic precision autostainer for fast multiplexed TSA-based immunofluorescence | Alexandre Kehren, M.Sc. Application Development Engineer |
| 3-Jun | 04:00 - 05:00 PM | | Spatial Mapping of Gene Expression in Tumors using the RNAscope™ Technology | Anushka Dikshit, PhD Application Scientist - Advanced Cell Diagnostics |
| 3-Jun | 12:00 - 12:05 AM | Immunotherapeutic Modalities | Checkpoint blockade-induced autoimmunity: Lessons from mouse models of type 1 diabetes | Tijana Martinov, PhD Postdoctoral Fellow, Laboratory of Dr. Philip Greenberg, Fred Hutchinson Cancer Research Center, Scholar of the Parker Institute for Cancer Immunotherapy |
| 3-Jun | 12:00 - 12:05 AM | Development and Clinical Applications of Cancer Immunotherapies | Clinical Development of Immunotherapy in Urothelial Cancer | Scot Niglio, MD Assistant Research Physician, National Institutes of Health, National Cancer Institute, Genitourinary Malignancy Branch and the Laboratory of Tumor Immunology and Biology |
| 3-Jun | 12:00 - 12:05 AM | Immunotherapeutic Modalities | Deciphering the function of B cells in human cancer | Tullia C. Bruno, PhD Assistant Professor, University of Pittsburgh, Hillman Cancer Center |
| 3-Jun | 12:00 - 12:05 AM | Latest Trends in Immuno-Oncology | Define challenges of tissue-based biomarker development for Immuno-Oncology Therapy | Houssein Sater, MD Physician scientist at NCI (National Cancer Institute) |

| | | | | |
|-------|---------------------------|-------------------------------------|--|--|
| 3-Jun | 12:00 - 12:05 AM | Latest Trends in Immuno-Oncology | Microenvironment on Demand: A breakthrough technology for personalized cell therapy discoveries | Maithreyan Srinivasan Chief Scientific Officer, Scribe Biosciences |
| 3-Jun | 12:00 - 12:05 AM | Latest Trends in Immuno-Oncology | Overcoming cell therapy barriers in the suppressive tumor microenvironment with engineered proteins | Shannon K. Oda, PhD Principal Investigator, Seattle Children's Research Institute, Assistant Professor, University of Washington School of Medicine |
| 3-Jun | 12:00 - 12:05 AM | Immunotherapeutic Modalities | Primary and Acquired Resistance to Cancer Immunotherapy | Leonardo Nissola, MD Clinical Scientist, The Parker Institute for Cancer Immunotherapy, and Former Medical Oncology Fellow at the University of Texas MD Anderson Cancer Center |