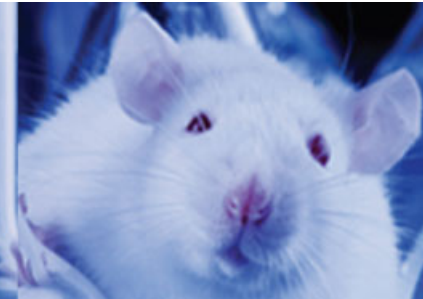


LABORATORY ANIMAL SCIENCES

FEBRUARY 3-4, 2016



Date	Time	Track	Presentation Title	Speaker
3-Feb	06:00 - 07:00 AM	Optimizing the conduct and implementation of animal studies	Creating the Right Animal Program to Facilitate Quality Animal Studies. The AAALAC International Perspective	Javier Guillen, DVM Senior Director and Director of European Activities, AAALAC International
3-Feb	06:00 - 07:00 AM	Optimizing Animal Study Designs	From the 3Rs to Systematic Reviews	Merel Ritskes-Hoitinga, DVM, PhD, Animal Welfare Officer, Dipl ECLAM Professor, Laboratory Animal Science, Managing Director, Central Animal Laboratory (CDL), Radboud University Medical Center
3-Feb	07:30 - 08:30 AM	Optimizing the conduct and implementation of animal studies	Keynote: Vibration, Noise & Ultrasonic Noise From Vivarium and Lab Equipment as Rapidly Growing Confounds in Animal Research	Jeremy G Turner, PhD CEO, OtoScience Labs, Professor of Psychology, Illinois College
3-Feb	09:00 - 10:00 AM	Optimizing Reproducibility of Animal Studies	Keynote: Risks of Bias in in vivo research - and what to do about them	Malcolm Macleod BSc(Hons) MBChB PhD FRCP Ed Professor of Neurology and Translational Neuroscience, Centre for Clinical Brain Sciences, University of Edinburgh
3-Feb	10:30 - 11:30 AM	Optimizing the conduct and implementation of animal studies	Assessment of animal welfare risks for externalized animal studies by partnering diligence and scientific review at GlaxoSmithKline	Mary Ann Vasbinder, DVM Director, Office of Animal Welfare, Ethics and Strategy, GlaxoSmithKline
3-Feb	10:30 - 11:30 AM	Optimizing Reproducibility of Animal Studies	Panel Discussion: Promoting reproducible animal research in journal publications	Linda A Toth, DVM, PhD Associate Dean of Research and Faculty Affairs, Professor of Pharmacology, Southern Illinois University School of Medicine Susan Compton Research Scientist in Comparative Medicine; Director, Molecular, Serological and Virological Diagnostics, Yale School of Medicine

3-Feb	10:30 - 11:30 AM	Industry	The Power of Nesting	Andrea Gay Regional Sales Manager, The Andersons Bedding Products, USA
3-Feb	12:00 - 01:00 PM	Optimizing Animal Study Designs	Evaluating the results of animal studies by means of Meta Analysis	Carlijn Hooijmans, PhD Assistant Professor, SYRCLE and Anesthesiology, Radboud University Medical Centre, Nijmegen, Netherlands
3-Feb	12:00 - 01:00 PM	Optimizing the conduct and implementation of animal studies	Panel: How should we conduct and assess teaching and training to optimize animal handling?	Klas Abelson, PhD Associate Professor, Department of Experimental Medicine, University of Copenhagen Jeffrey Everitt, DVM Director of Comparative Biology and Medicine, GlaxoSmithKline, Adjunct Professor of Pathology, Duke University School of Medicine
3-Feb	12:00 - 01:00 PM	Optimizing Reproducibility of Animal Studies	Panel: How small things can have a big impact on research and breeding in your rodent colony	Mandy Horn, MS Supervisor, North America, Veterinary Science, Research and Support, Envigo Sheri Wildt, MS, MBA, CMAR Global Manager of Genetic Quality and Breeding, Envigo
3-Feb	01:30 - 02:30 PM	Optimizing Reproducibility of Animal Studies	In-house development and implementation of surgical animal models	Szczepan Baran, VMD, MS Head of Emerging Technologies, LAS, Novartis
3-Feb	03:00 - 04:00 PM	Optimizing Animal Study Designs	Critical Appraisal of Animal Studies	Annette O'Connor, BVSc, MVSc, DVSc, FRCVSc Professor of Epidemiology, Iowa State University
3-Feb	03:00 - 04:00 PM	Optimizing the conduct and implementation of animal studies	The Future of Preclinical Animal Models in Pharmaceutical Discovery and Development: How the Scientific 3Rs of Relevance, Robustness and Reproducibility are Critical	Jeffrey Everitt, DVM Director of Comparative Biology and Medicine, GlaxoSmithKline, Adjunct Professor of Pathology, Duke University School of Medicine
4-Feb	06:00 - 07:00 AM	Optimizing Reproducibility of Animal Studies	Improving methodological quality of animals experiments - are we doing all we can?	Nuno Henrique Franco, PhD Post-Doc Researcher, i3S (Instituto de Investigação e Inovação em Saúde)
4-Feb	06:00 - 07:00 AM	Optimizing Animal Study Designs	Steps on the route to optimising experimental design, including teaching and conducting systematic reviews	Derek Fry OBE, MA, D Phil, MB BCh Faculty of Life Sciences, University of Manchester Rob de Vries, PhD Scientific Researcher & Coordinator, SYRCLE, Central Animal Laboratory, Radboud University Medical Center

4-Feb	06:00 - 07:00 AM	Optimizing the conduct and implementation of animal studies	Zebrafish: an upswing model in research and the need for refinement of anaesthesia	Ana Maria Valentim, PhD Post-doctoral Researcher, i3S (Instituto de Investigação e Inovação em Saúde)
4-Feb	07:30 - 08:30 AM	Optimizing the conduct and implementation of animal studies	Keynote: A good death? Are our 'euthanasia' methods for lab animals actually humane?	Huw Golledge, PhD Senior Scientific Programme Manager, Universities Federation for Animal Welfare and the Humane Slaughter Association
4-Feb	09:00 - 10:00 AM	Optimizing Reproducibility of Animal Studies	Keynote: The ARRIVE guidelines: Improving the design and reporting of animal research to optimize the reproducibility of animal studies	Katie Lidster, PhD Science Manager, National Centre for the Replacement, Refinement and Reduction of Animals in Research (NC3Rs)
4-Feb	10:30 - 11:30 AM	Optimizing Reproducibility of Animal Studies	Reproducibility of Animal Studies - An Animal Welfare/Ethical Perspective	Vatsala Naageshwaran, MS Director of Operations, Absorption Systems Stacy Pritt, DVM, MS, MBA, CPIA, DACAW Director, Institutional Animal Care and Use Committee, University of Texas (UT) Southwestern Medical Center
4-Feb	10:30 - 11:30 AM	Optimizing Animal Study Designs	Sex As A Biological Variable In Rodent Models	Stephanie J Murphy, VMD, PhD, DACLAM Director, Division of Comparative Medicine, Office of Research Infrastructure Programs, Division of Program Coordination, Planning, and Strategic Initiatives, Office of the Director, National
4-Feb	10:30 - 11:30 AM	Optimizing the conduct and implementation of animal studies	Stressed out! The consequences of environmentally induced stress on mouse models	Brianna Gaskill, PhD Associate Professor of Animal Welfare, Animal Sciences, Purdue University, College of Agriculture
4-Feb	12:00 - 01:00 PM	Industry	Optimizing reproducibility in animal studies through assurance of animal welfare	Marilyn J Brown, DVM MS ACLAM ECLAM Corporate Vice President, Global Animal Welfare, Charles River Laboratories
4-Feb	12:00 - 01:00 PM	Optimizing Animal Study Designs	What is needed for optimal experimental design and how this might be taught to laboratory animal scientists	Derek Fry OBE, MA, D Phil, MB BCh Faculty of Life Sciences, University of Manchester
4-Feb	01:30 - 02:30 PM	Optimizing the conduct and implementation of animal studies	Small Refinements = Large Enhancements to Science and Animal Welfare	Letty V Medina, DVM, DACLAM Director, Animal Welfare & Compliance, AbbVie, Inc.

4-Feb	03:00 - 04:00 PM	Optimizing the conduct and implementation of animal studies	Problems when breeding laboratory mice: why are pups dying?	Elin Weber, PhD, MS Postdoctoral Research fellow, Comparative Medicine, Stanford University
-------	---------------------------	--	--	---